

Stuttgart 210

weiterdenken — weiterbauen!

**PRO
HOLZ
BW**
ZÜBLIN

HTWG Hochschule Konstanz
Technik, Wirtschaft und Gestaltung

Hochschule für Technik
Stuttgart

Hochschule Karlsruhe
University of Applied Sciences **+IKA**





Rumpel



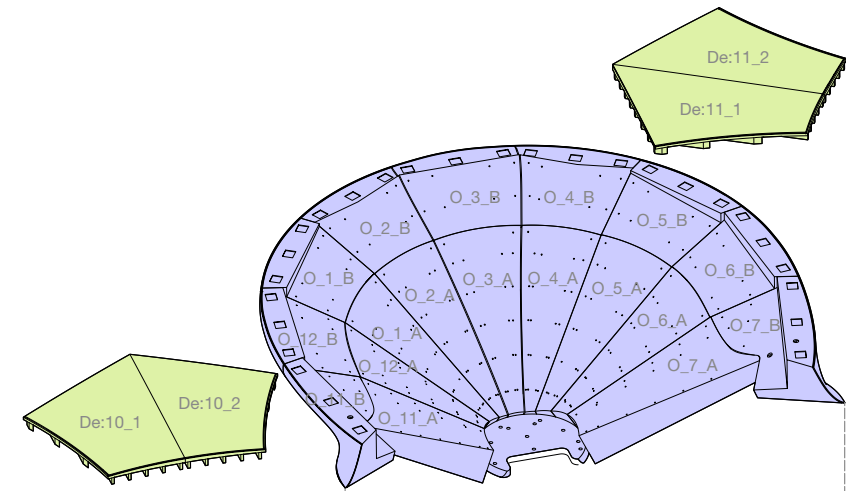
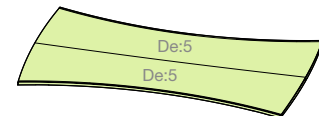
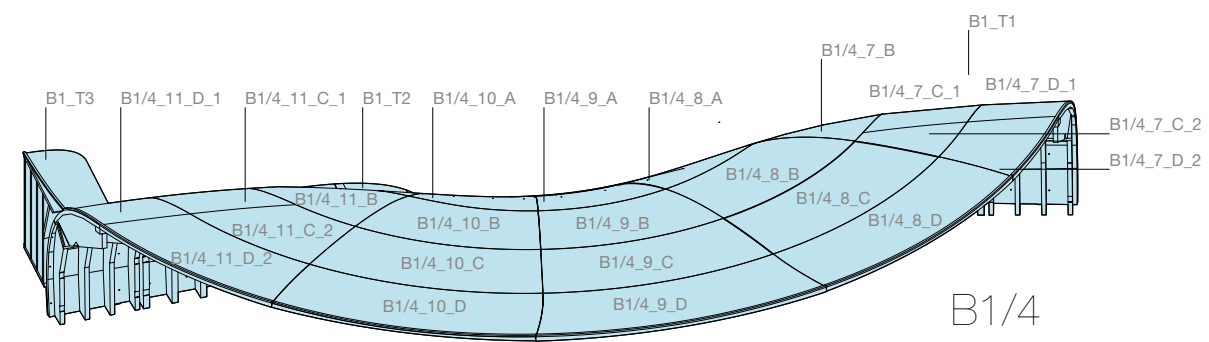
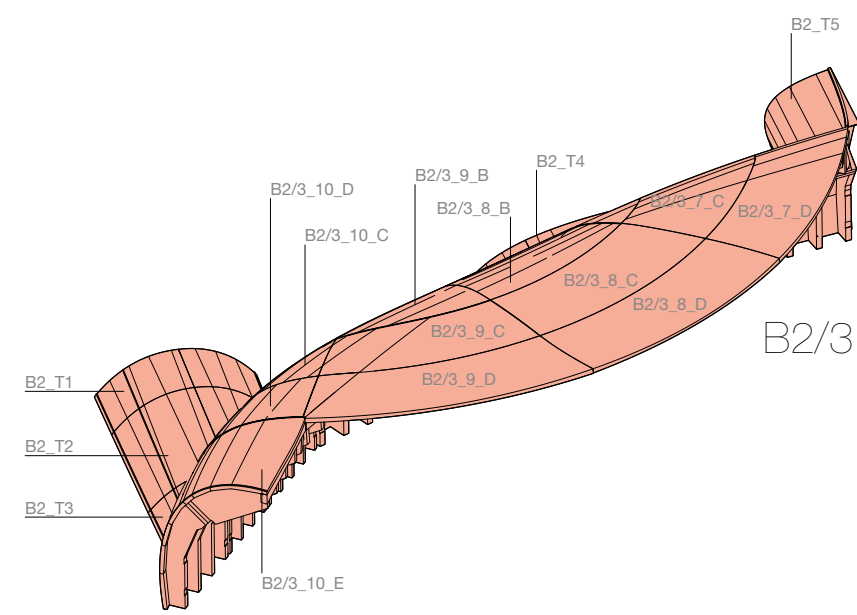




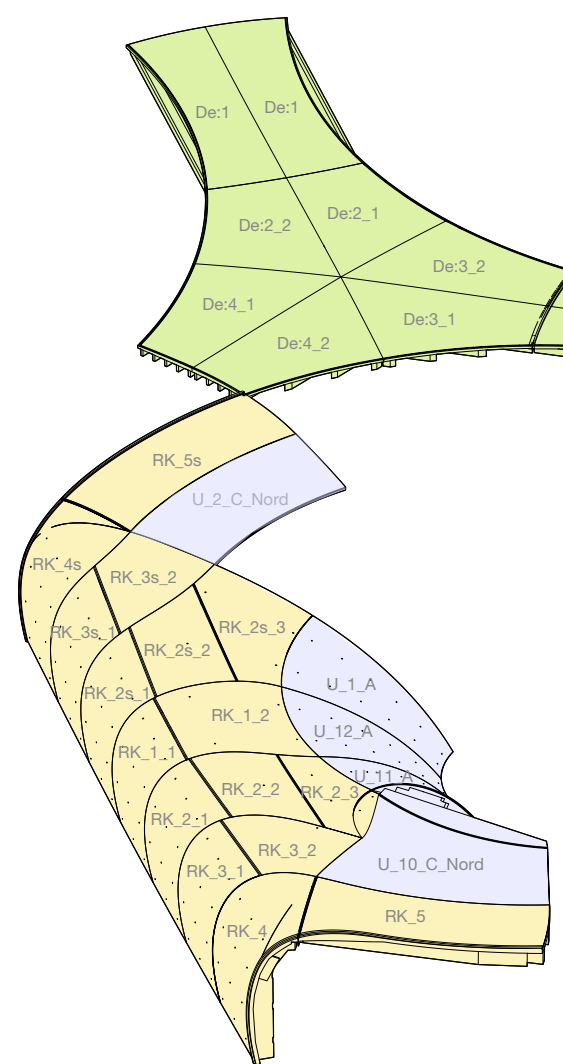
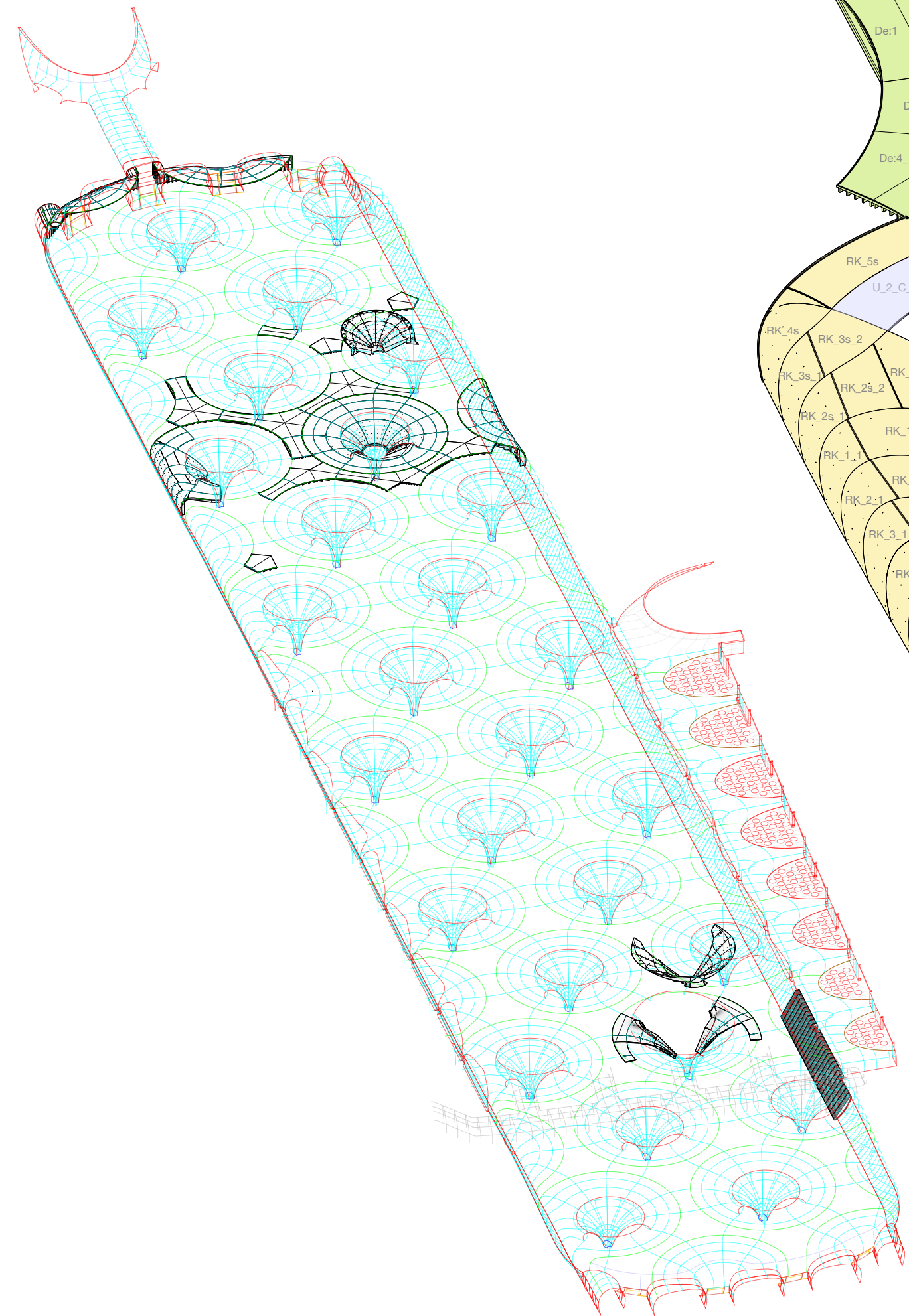




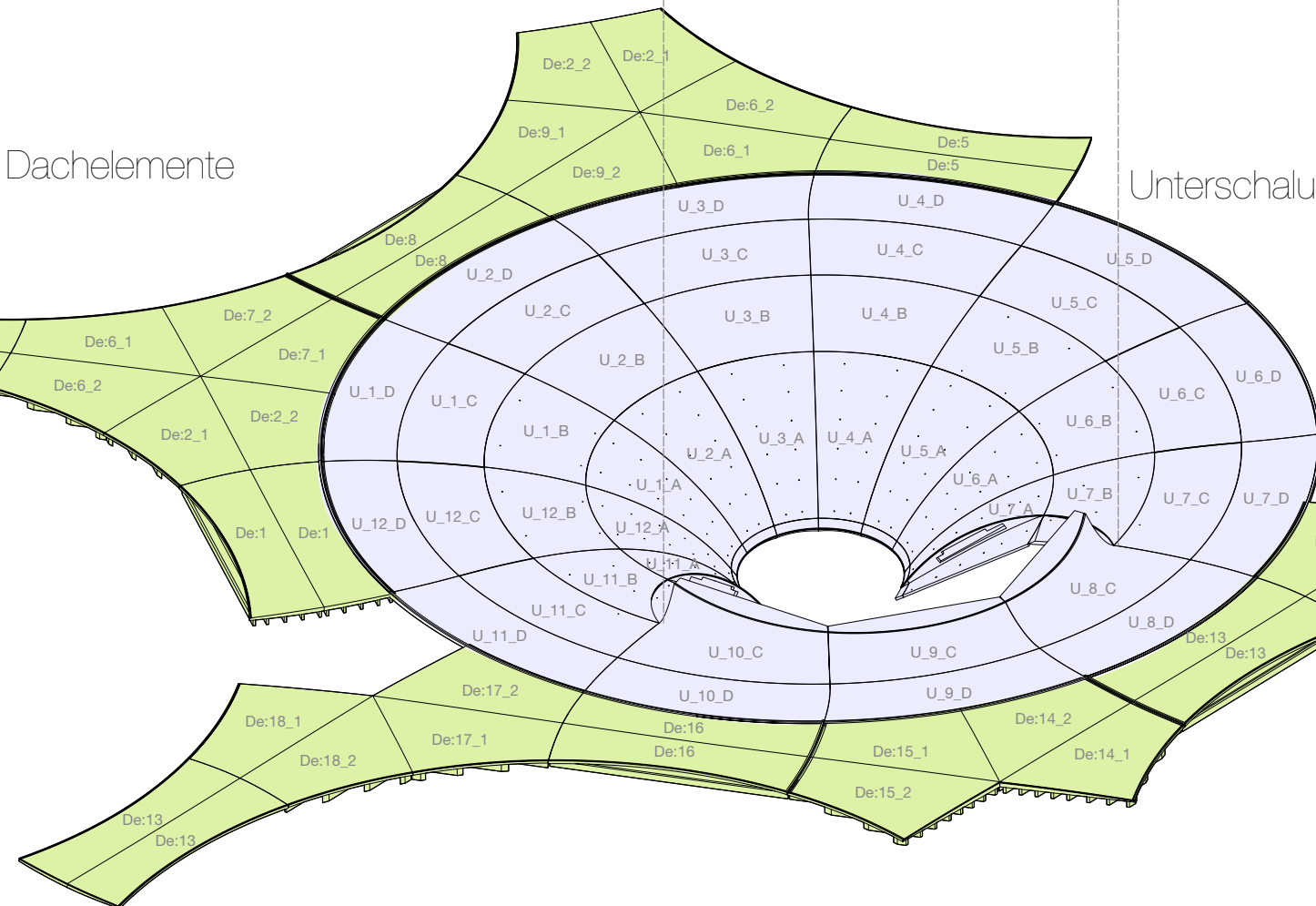
Reallabore



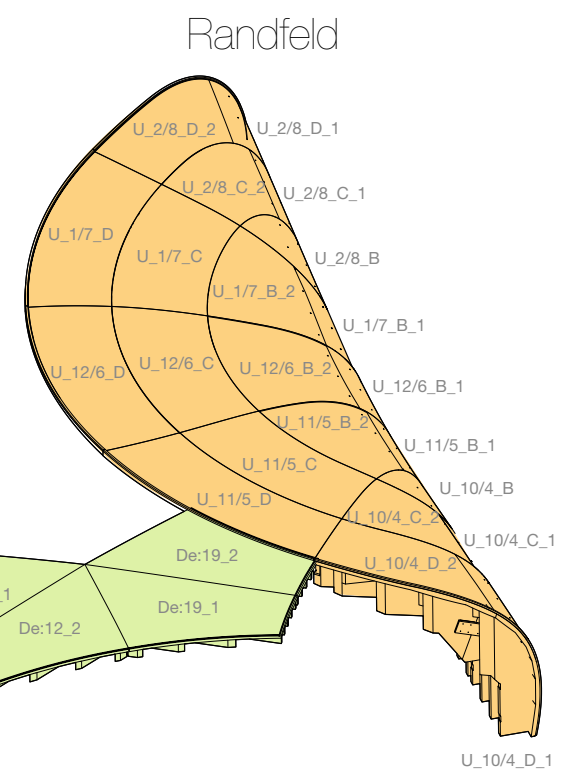
Oberschalung



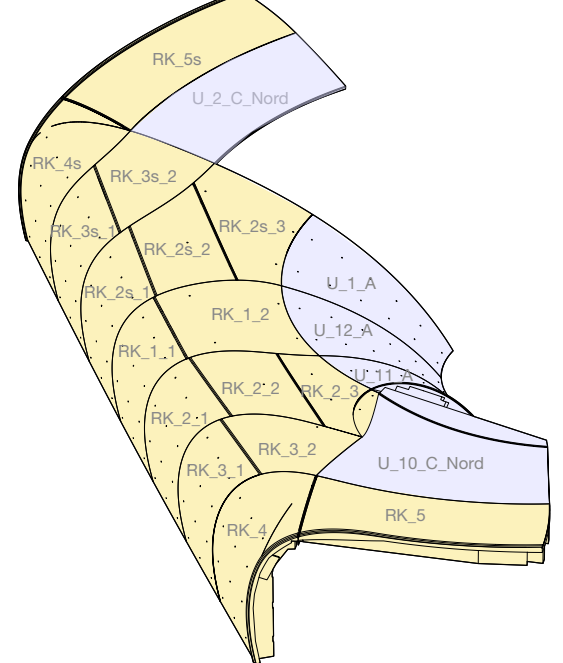
Dachelemente



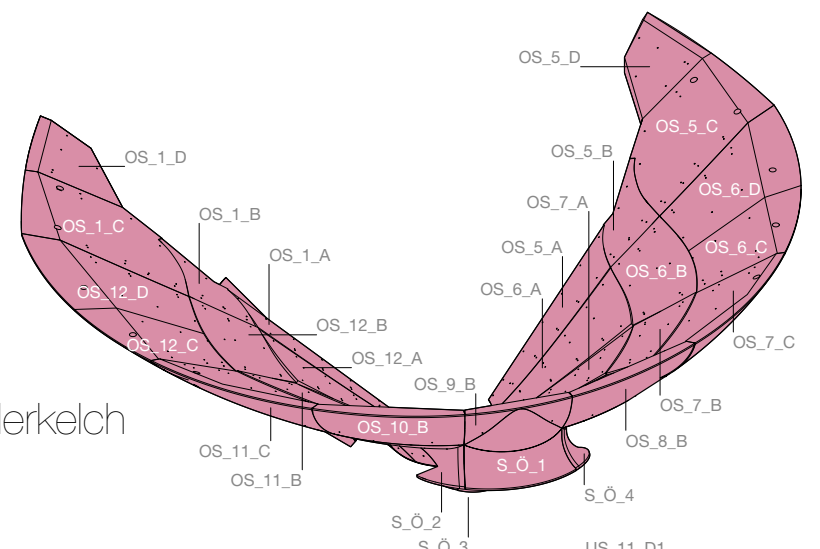
Unterschaltung



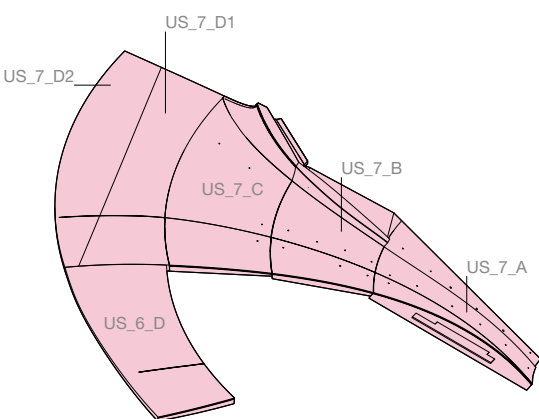
Randfeld



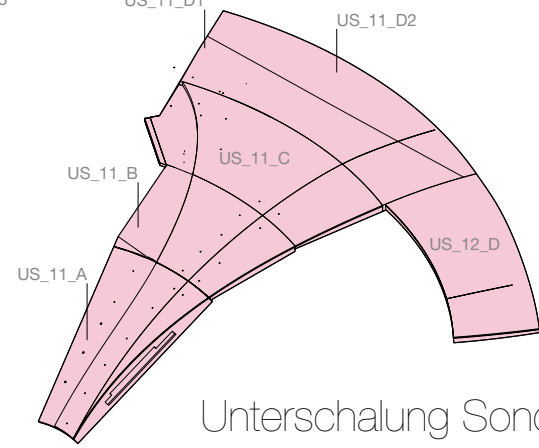
Randkern



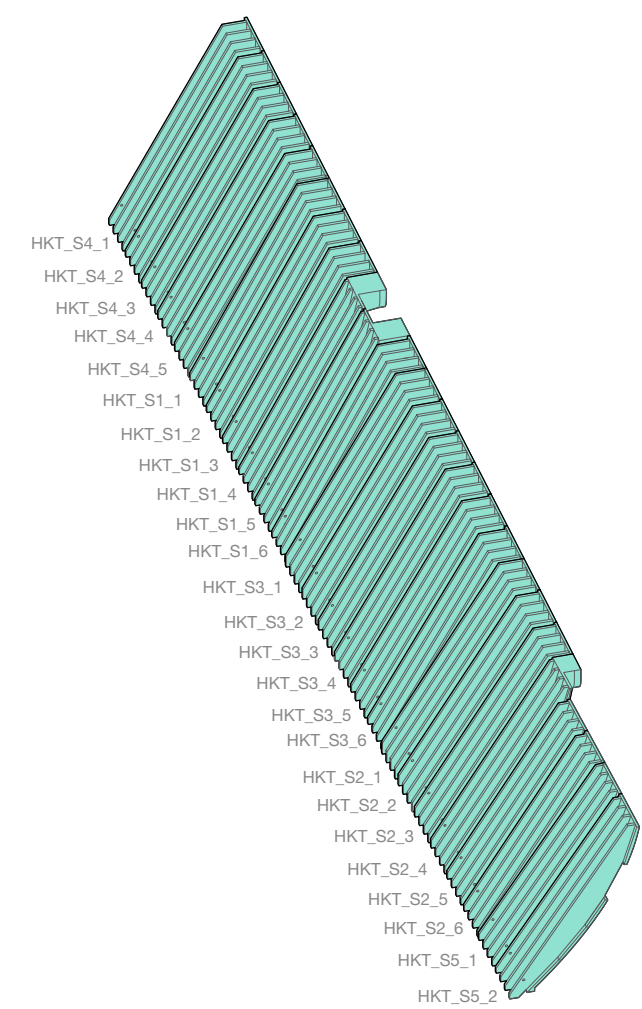
Oberschalung Sonderkern



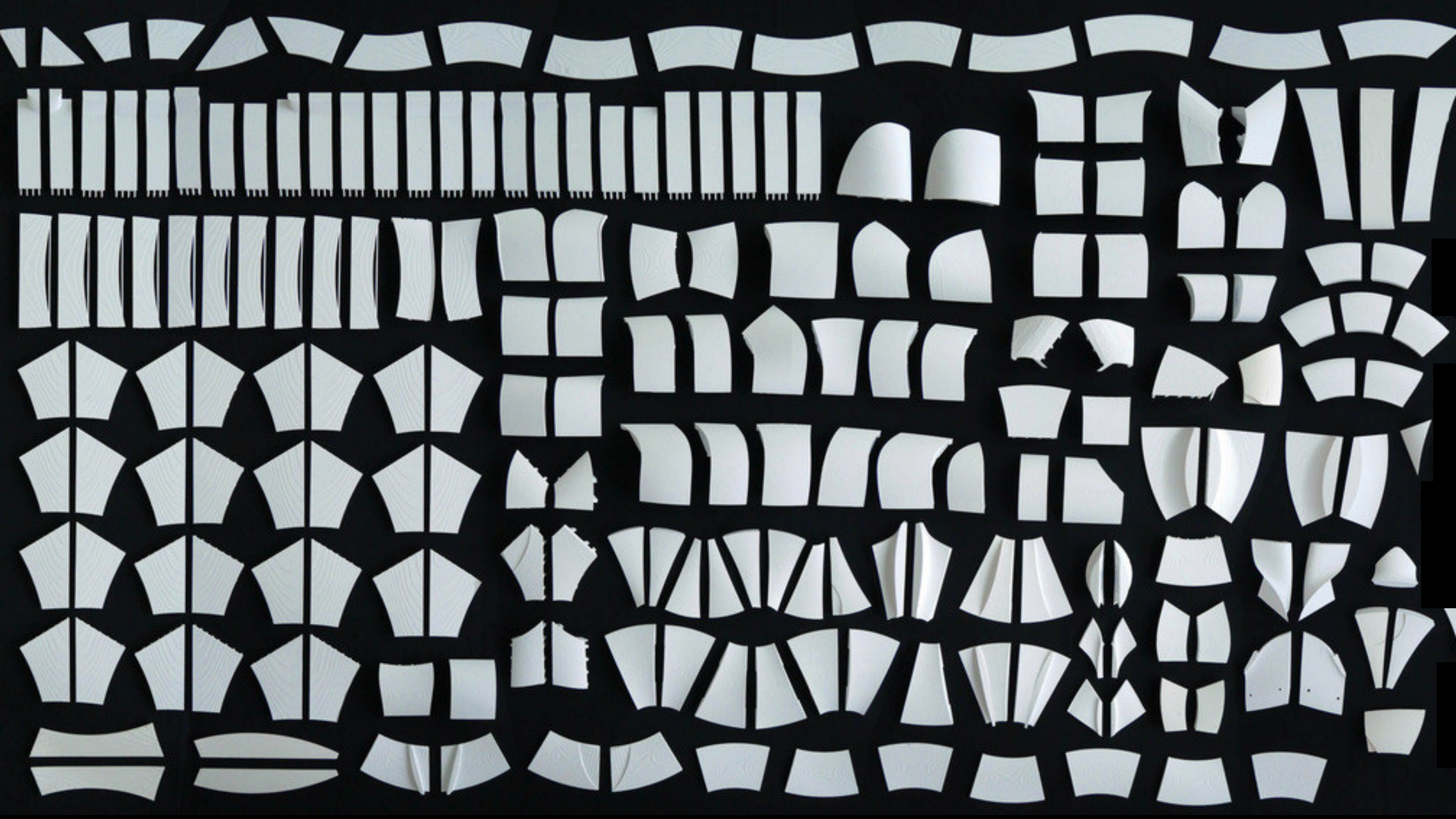
Unterschaltung Sonderkern



HKT







Bauherr Stuttgart 210
Deutsche Bahn

Projektpartner
Fa. Züblin Timber
Fa. Ed Züblin

Freigabe

Plangrundlage

**Koordination/
Komunikation**
ProHolz BW

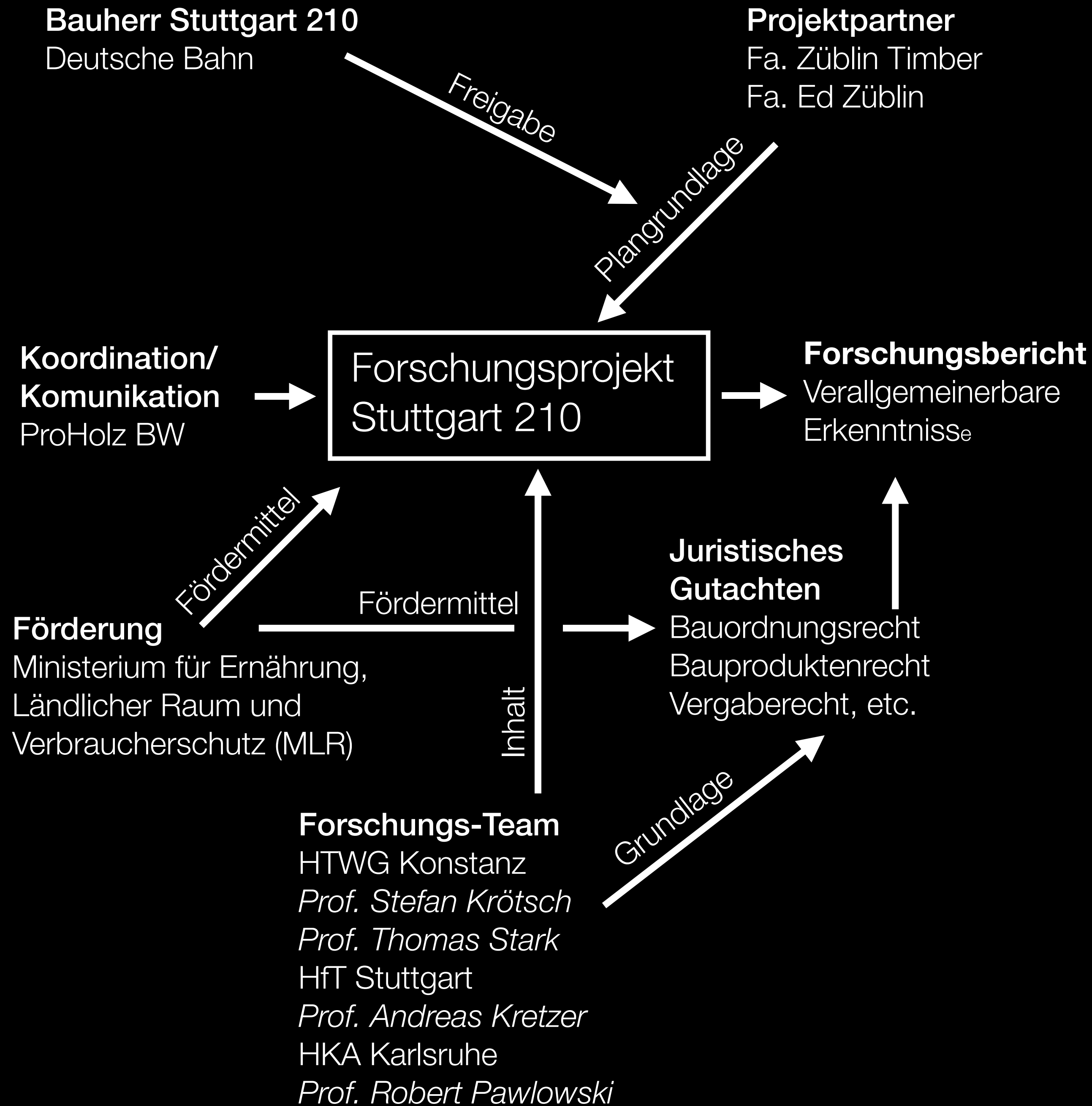
Forschungsprojekt
Stuttgart 210

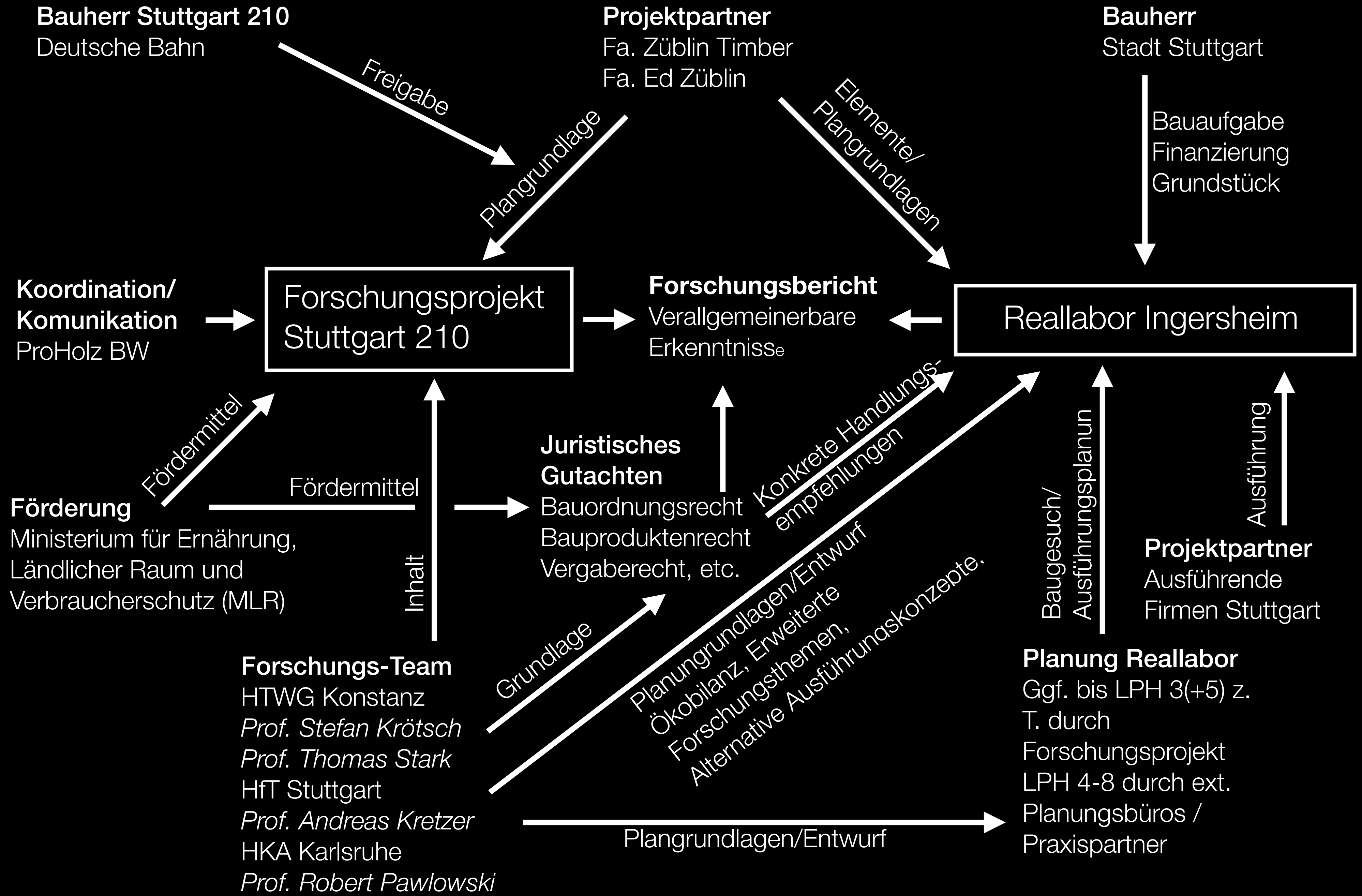
Fördermittel

Förderung
Ministerium für Ernährung,
Ländlicher Raum und
Verbraucherschutz (MLR)

Inhalt

Forschungs-Team
HTWG Konstanz
Prof. Stefan Krötsch
Prof. Thomas Stark
HfT Stuttgart
Prof. Andreas Kretzer
HKA Karlsruhe
Prof. Robert Pawlowski









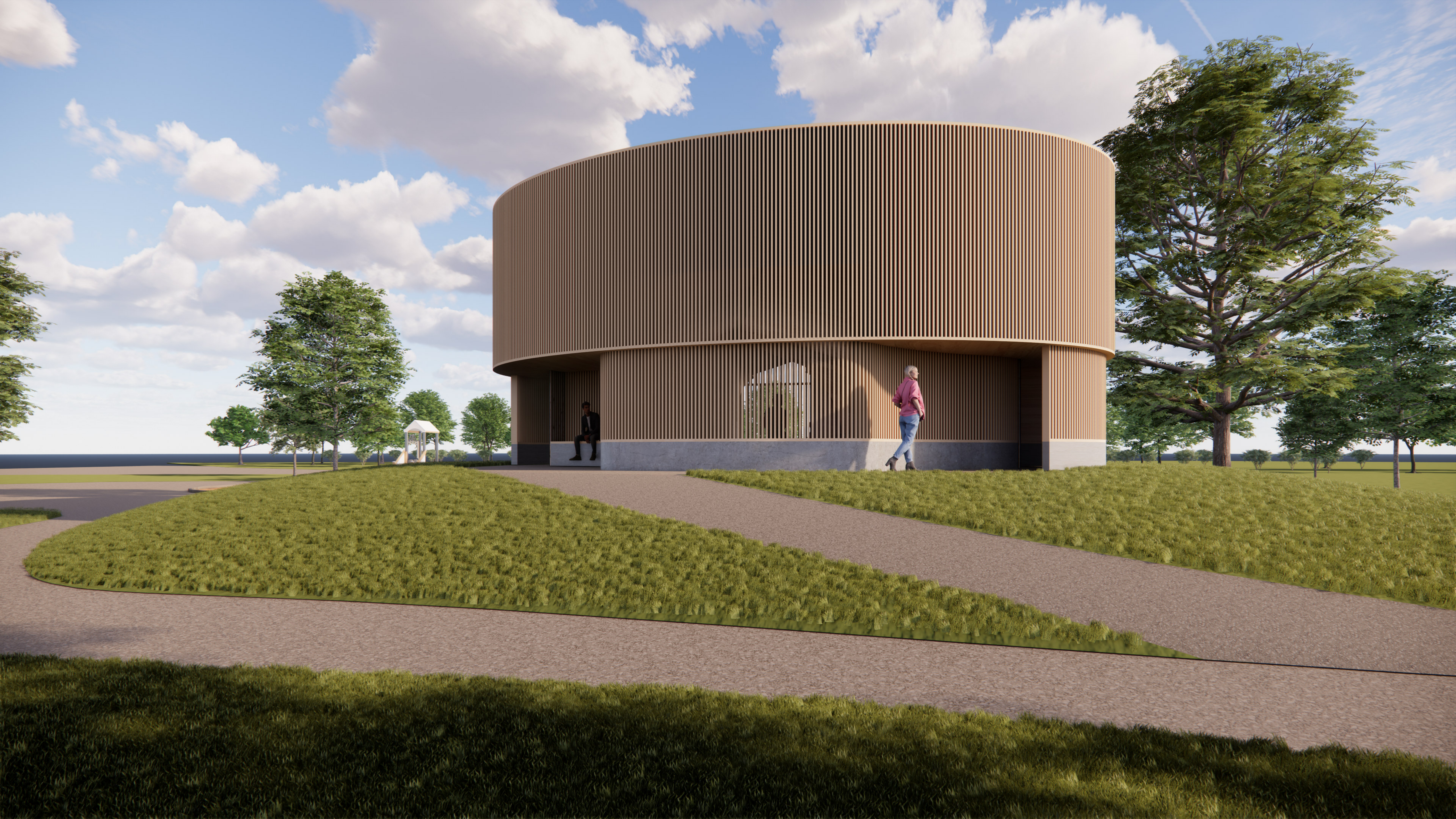


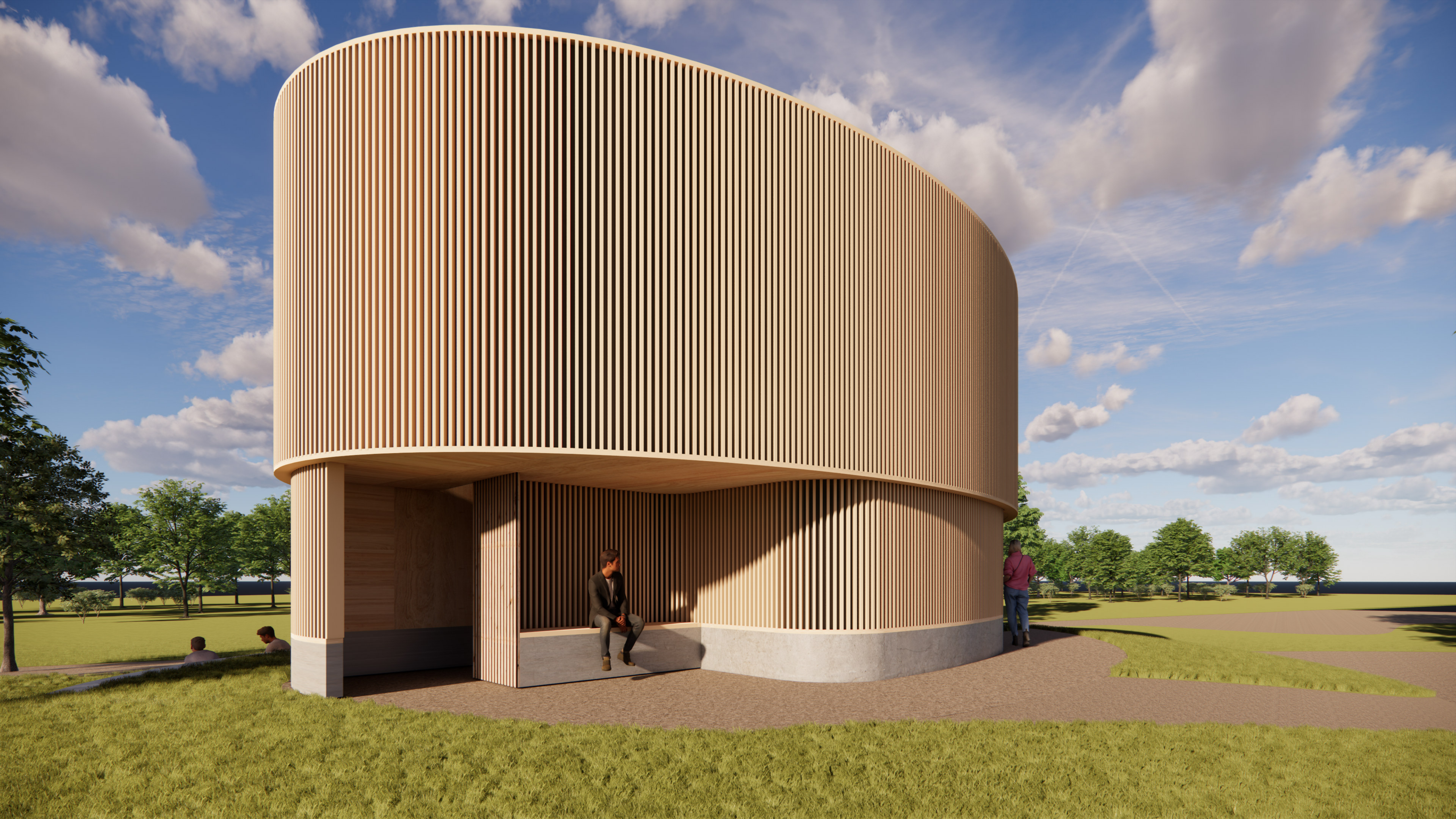




EPSON

Protokoll S210 28.02.2024
Dose Bearbeiten Ansicht Einfügen Format Tools Erweiterungen Hilfe
00 Entwurf
Verante Flap:
- Dach-Ruch, Wände Scheiben, keine Öffnungen außer Eingänge und Auslässe mit
- Latex, Scharf scharf
- Latexsch
01 Bauabfolge
- Entwurfskonzept - Montag
- Zeichnungen (Planlauf)
02 Tragwerksplanung
Fragen im Markt Fallhäuser
- Fundamente
- Anker Punktunterma
- Pfahlgründung? (Nichtwissen: 1,40 m über Bestandsgründe)
- Hebel
- Position der S210 Schaltungen (Abstand 0 - 0,5 m) Marke (Koffelkranz)
- Entschung der Rippen für vertikale Risse (unterste Rippe)
- Aufgipfel Schutz oder Rippe?
03 Ausführungsplanung
Schulung







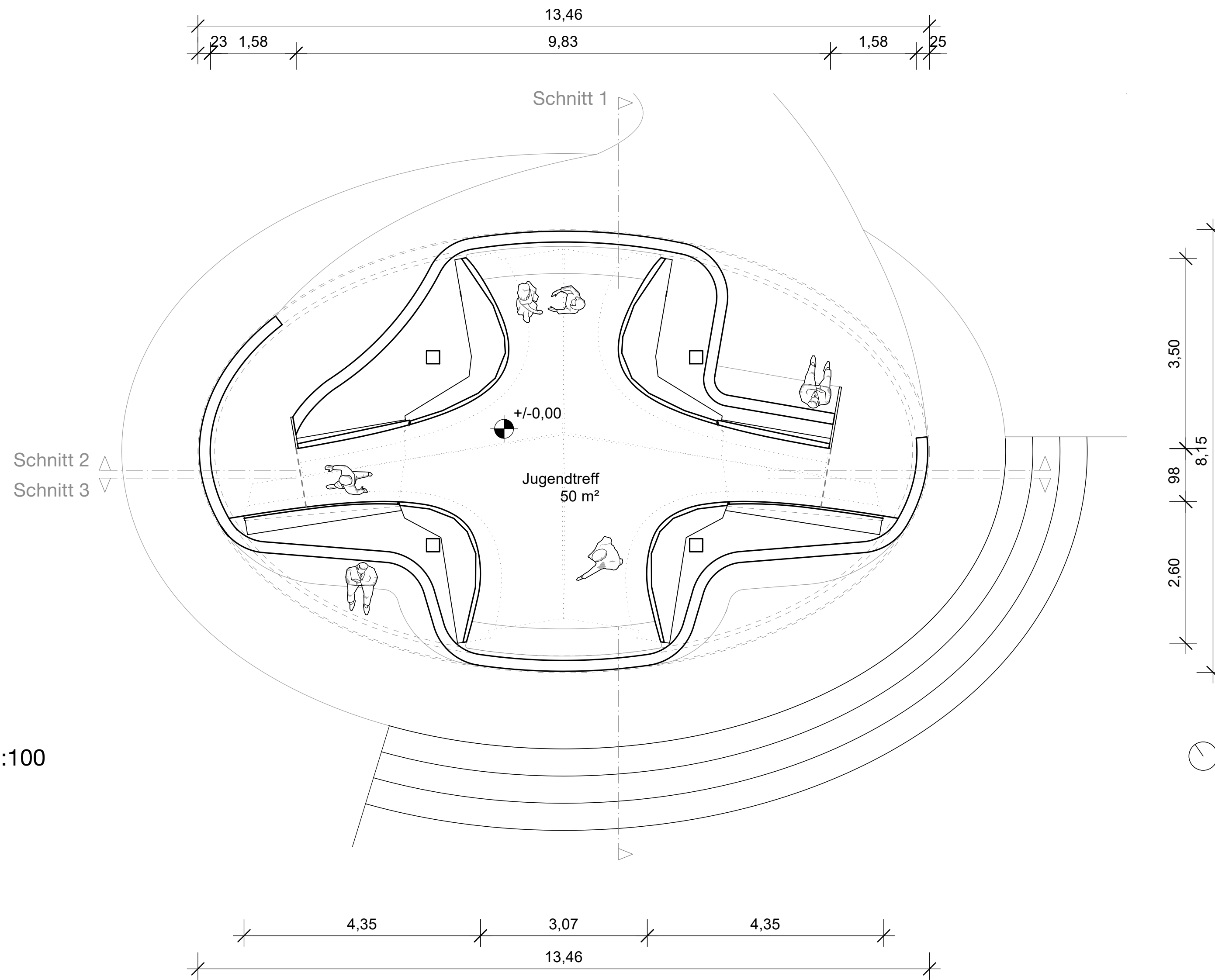




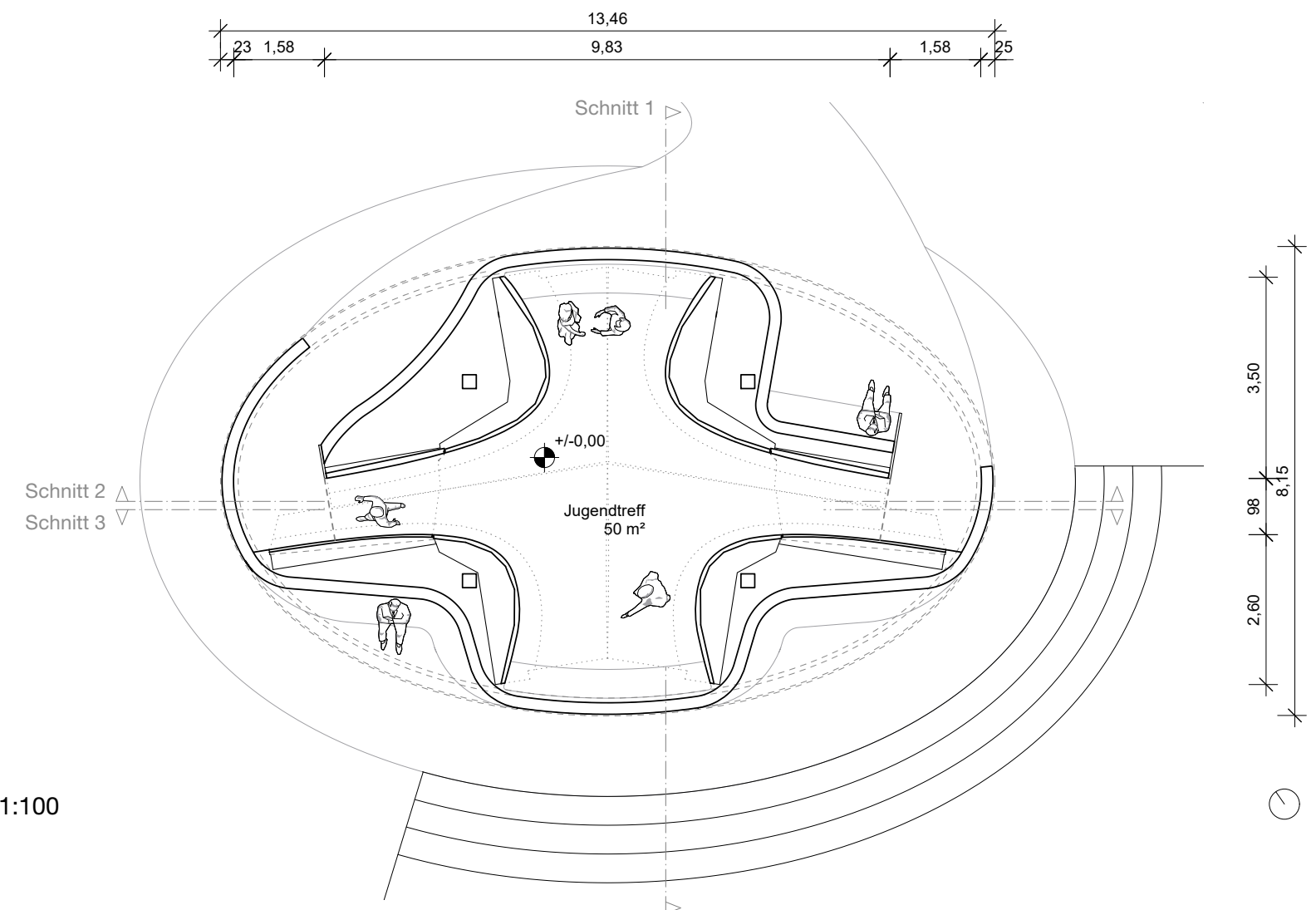




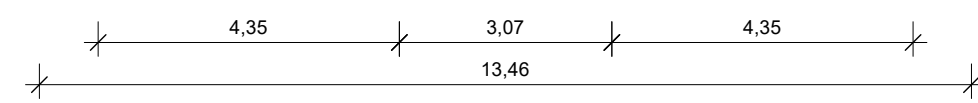




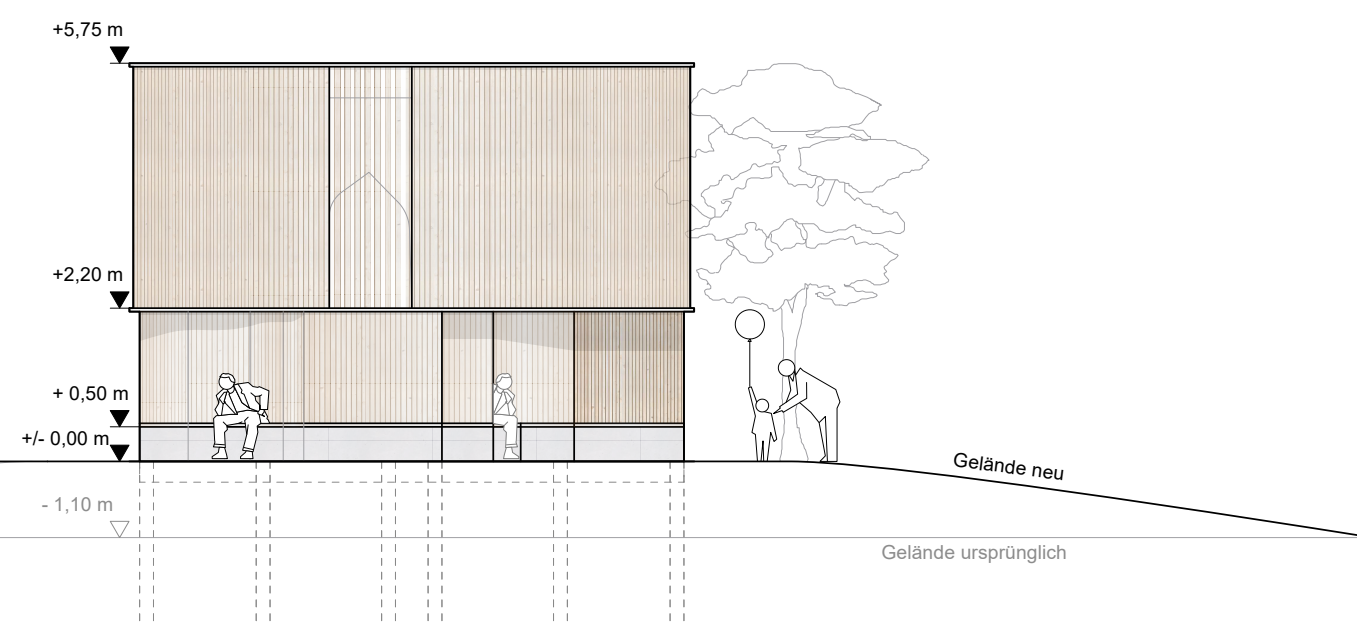
Grundriss M 1:100



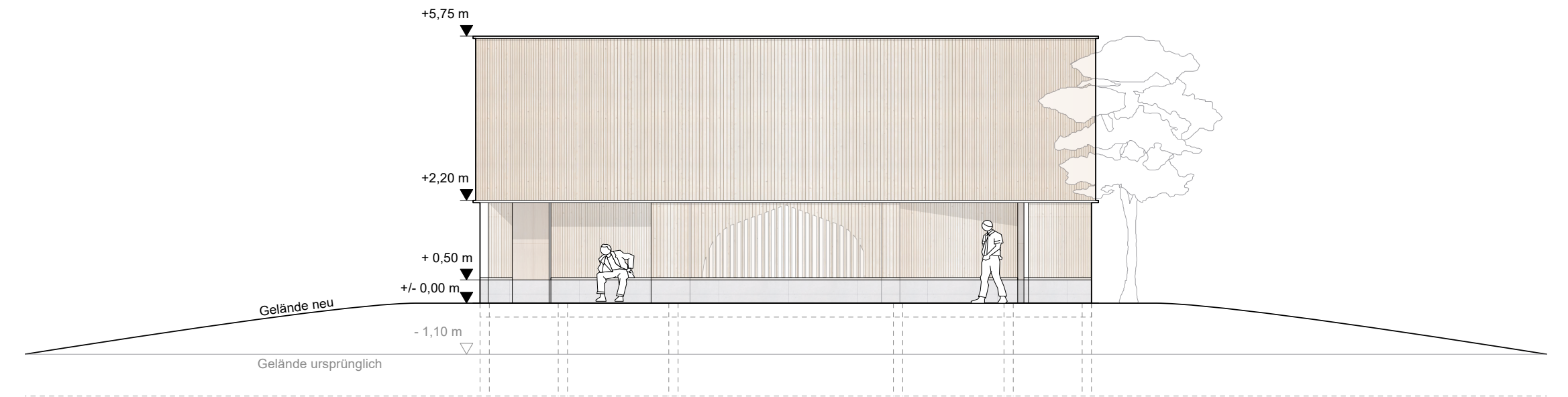
Grundriss M 1:100



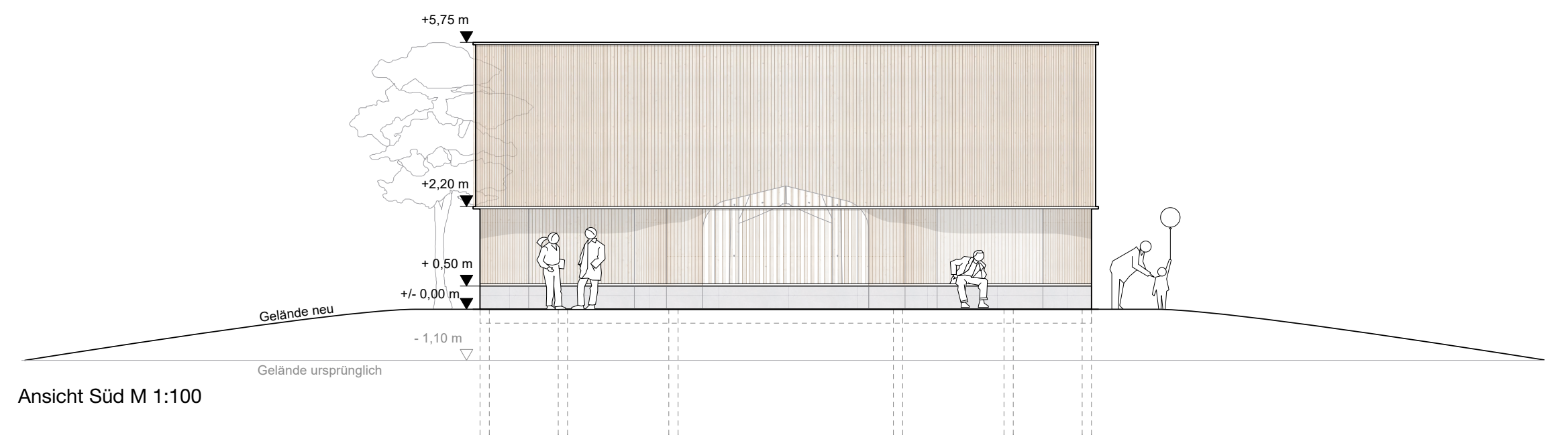
Ansicht Ost M 1:100

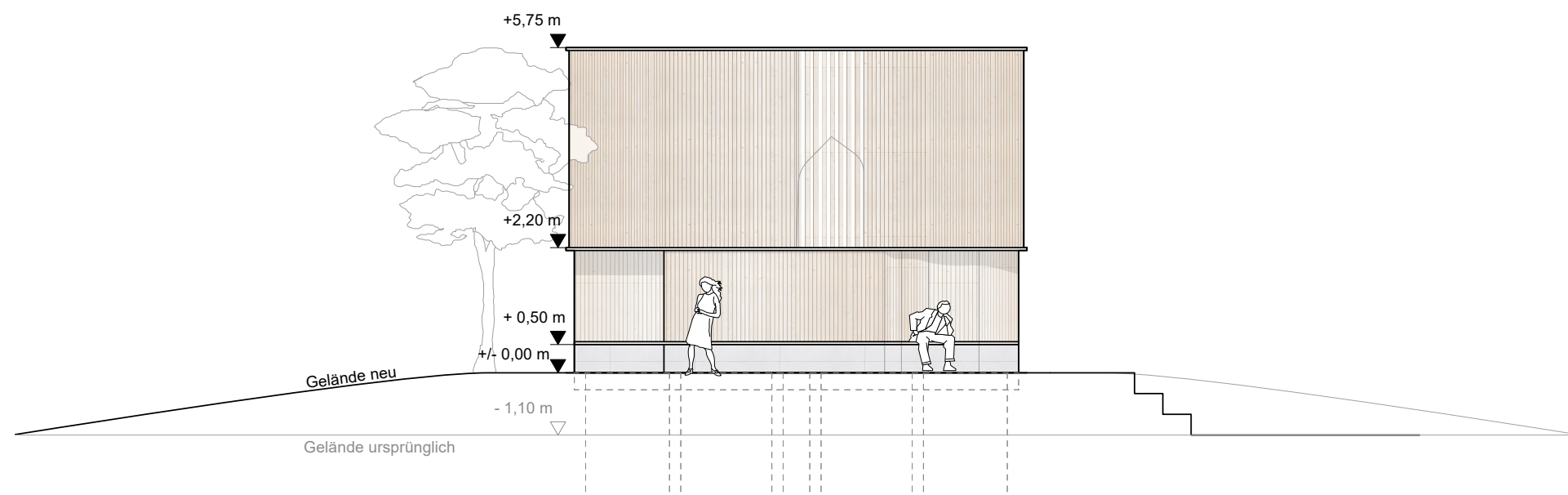


Ansicht Nord M 1:100

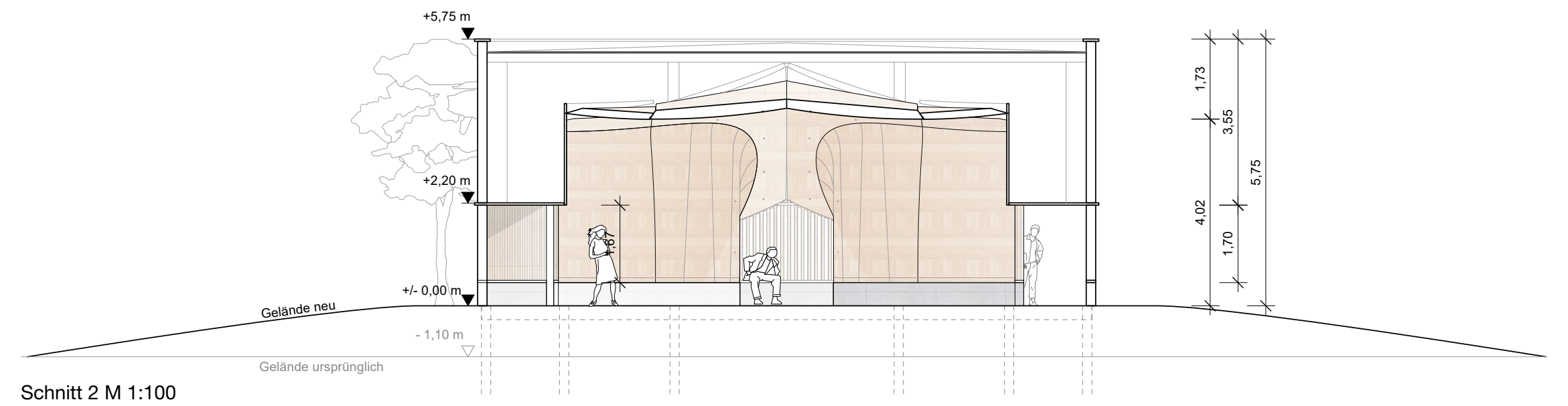


Ansicht Süd M 1:100

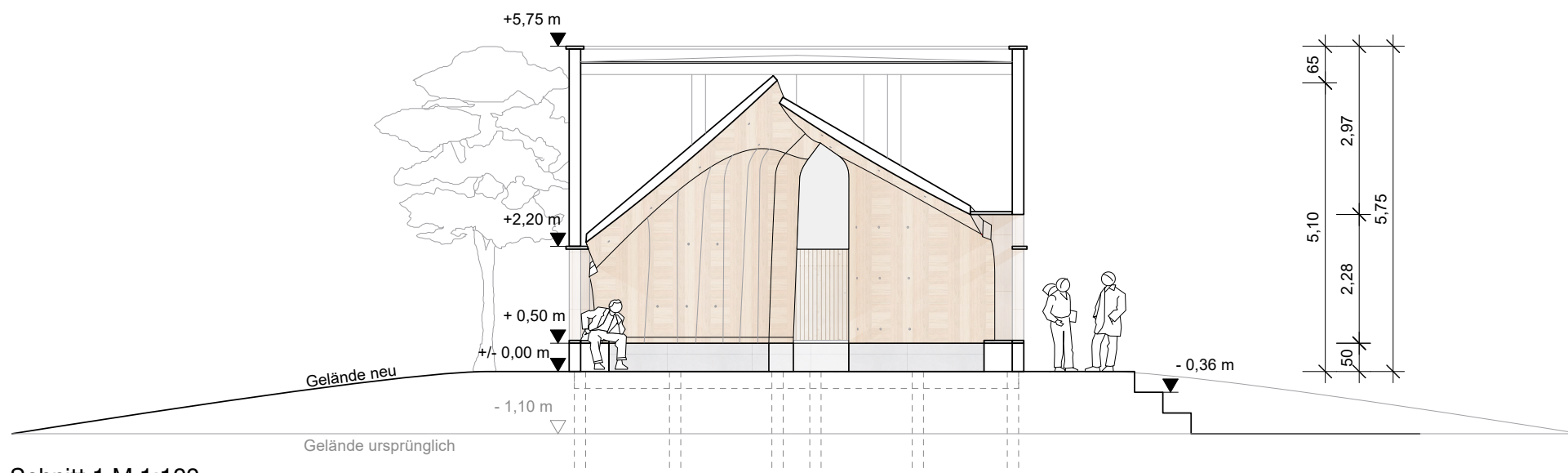




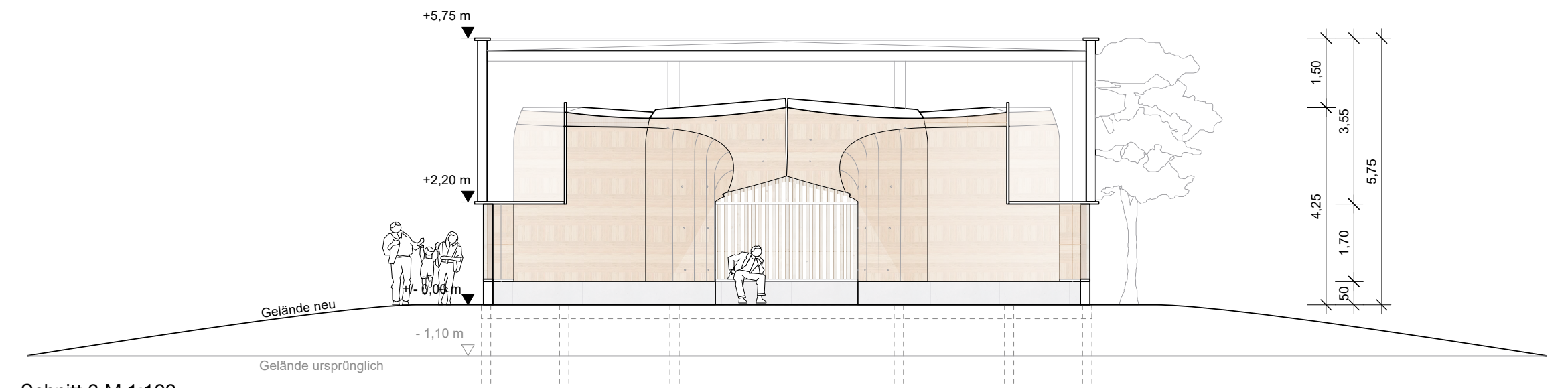
Ansicht West M 1:100



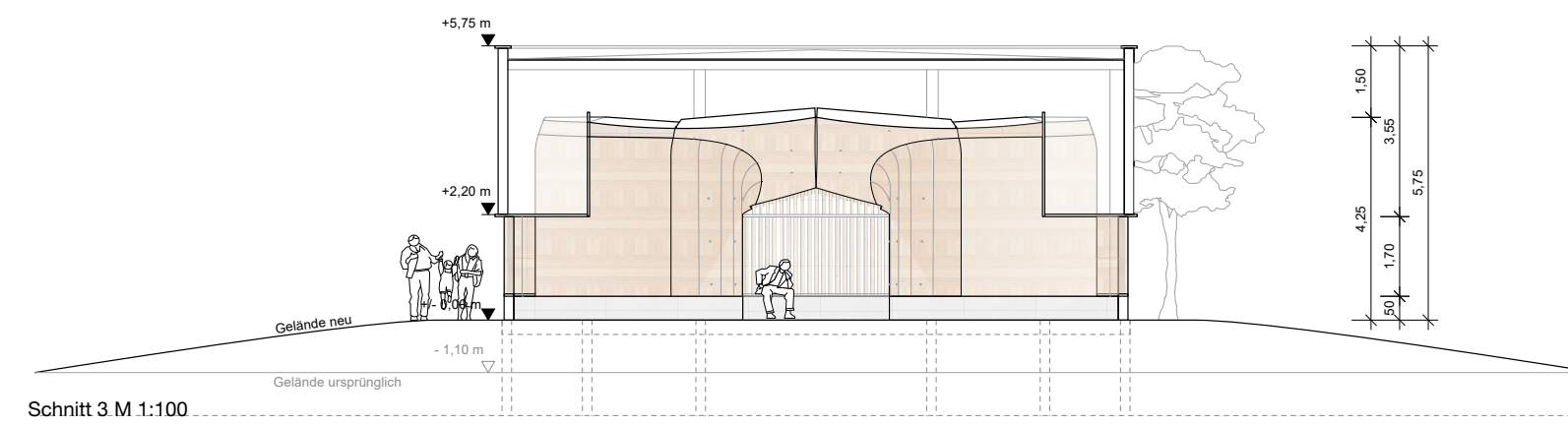
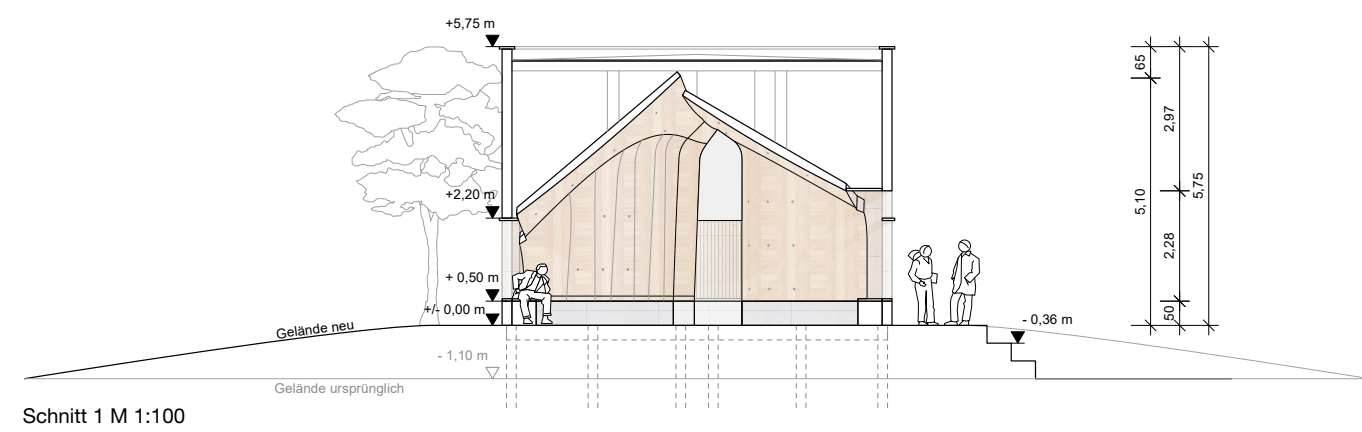
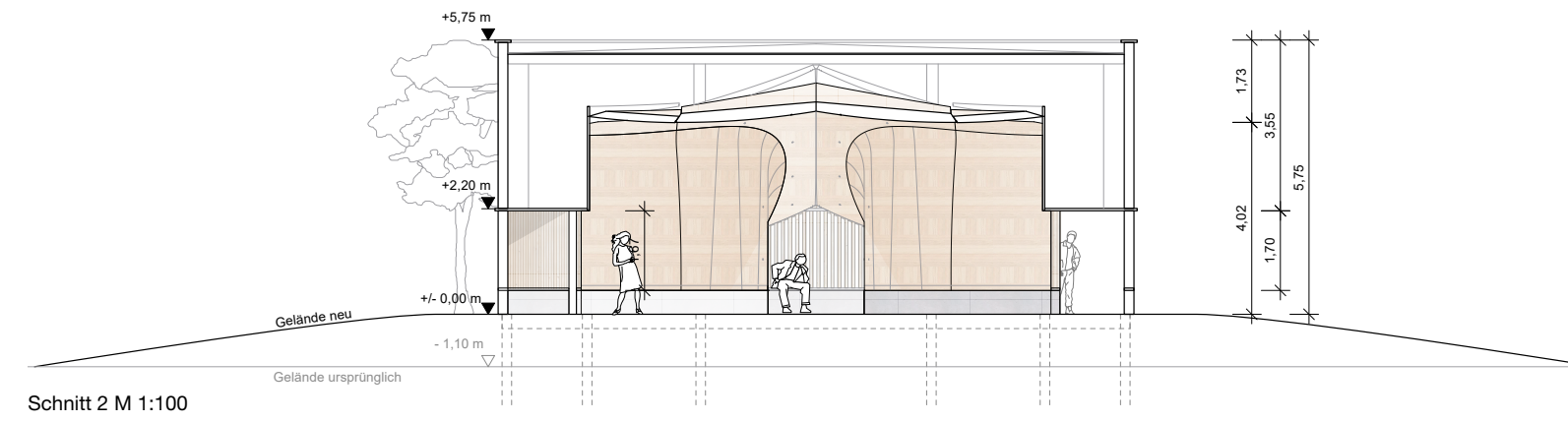
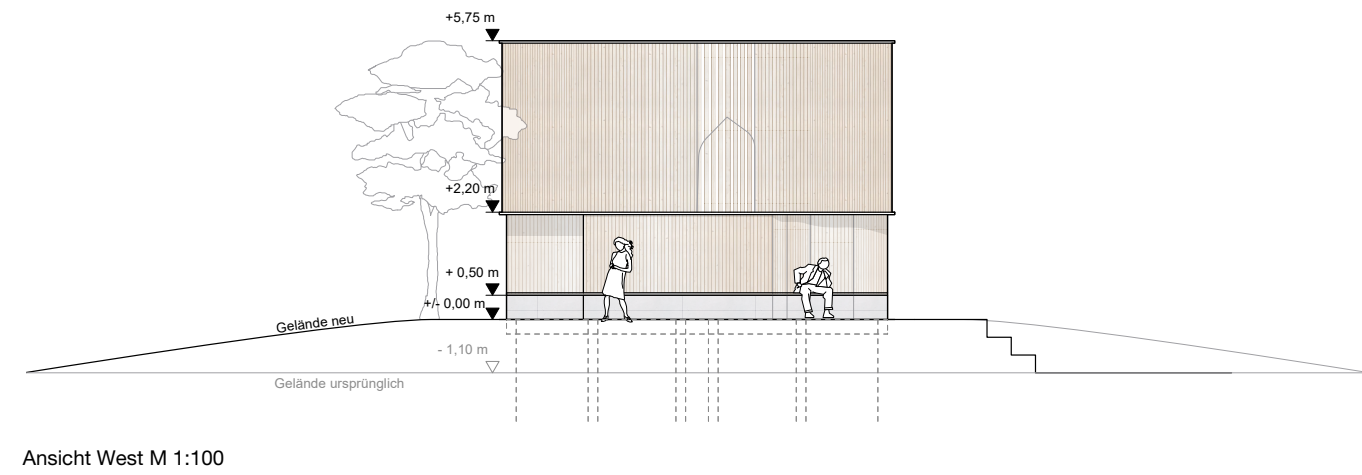
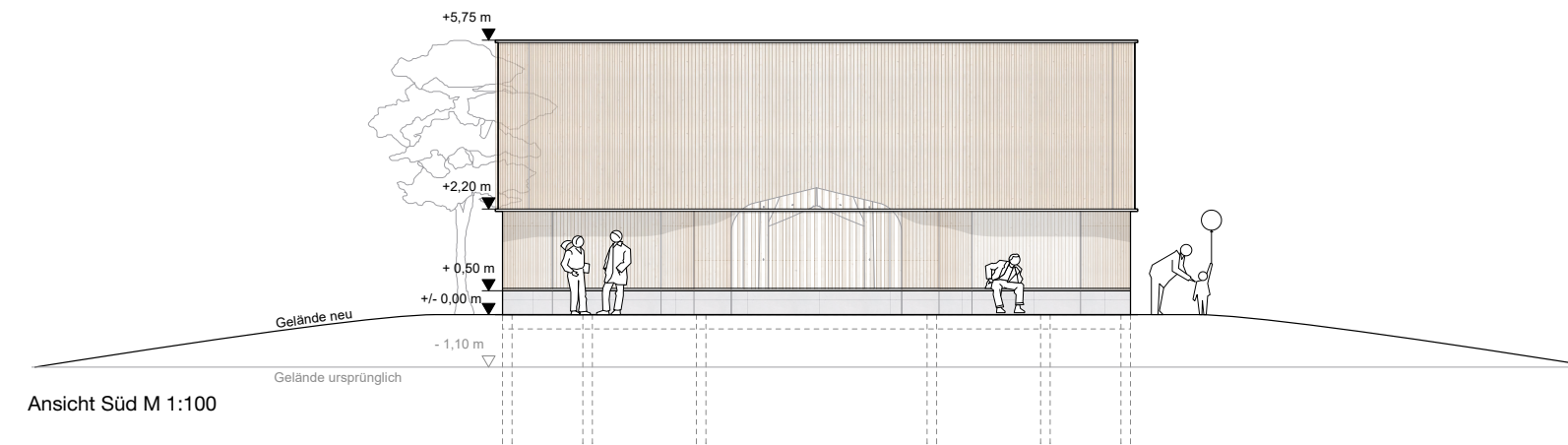
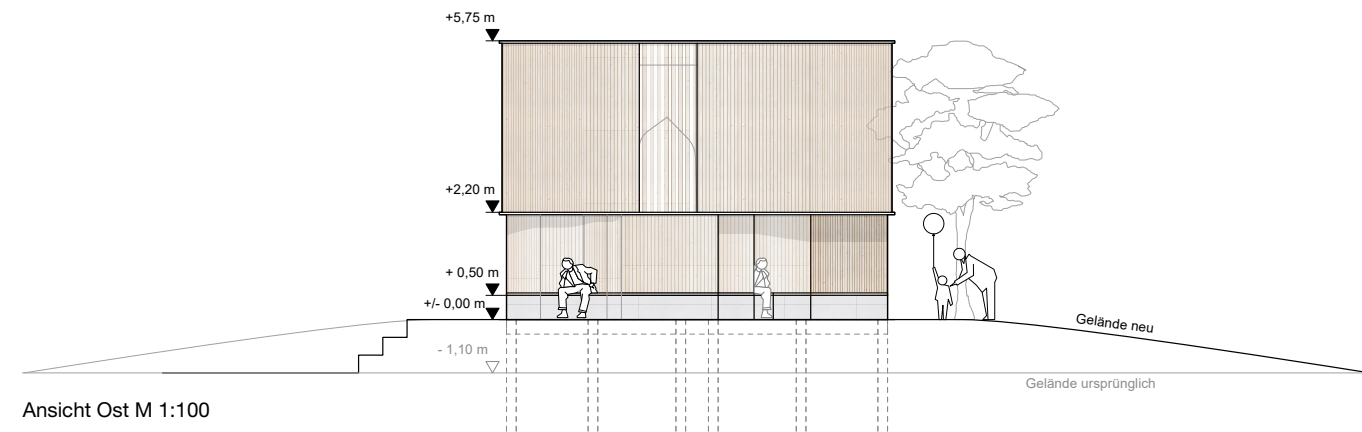
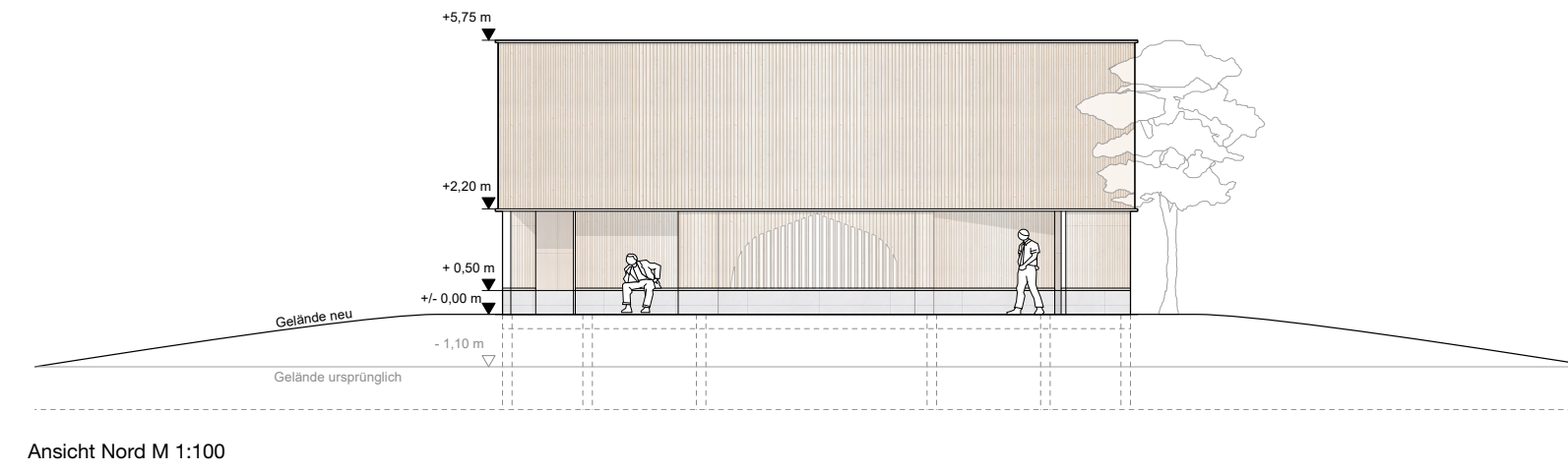
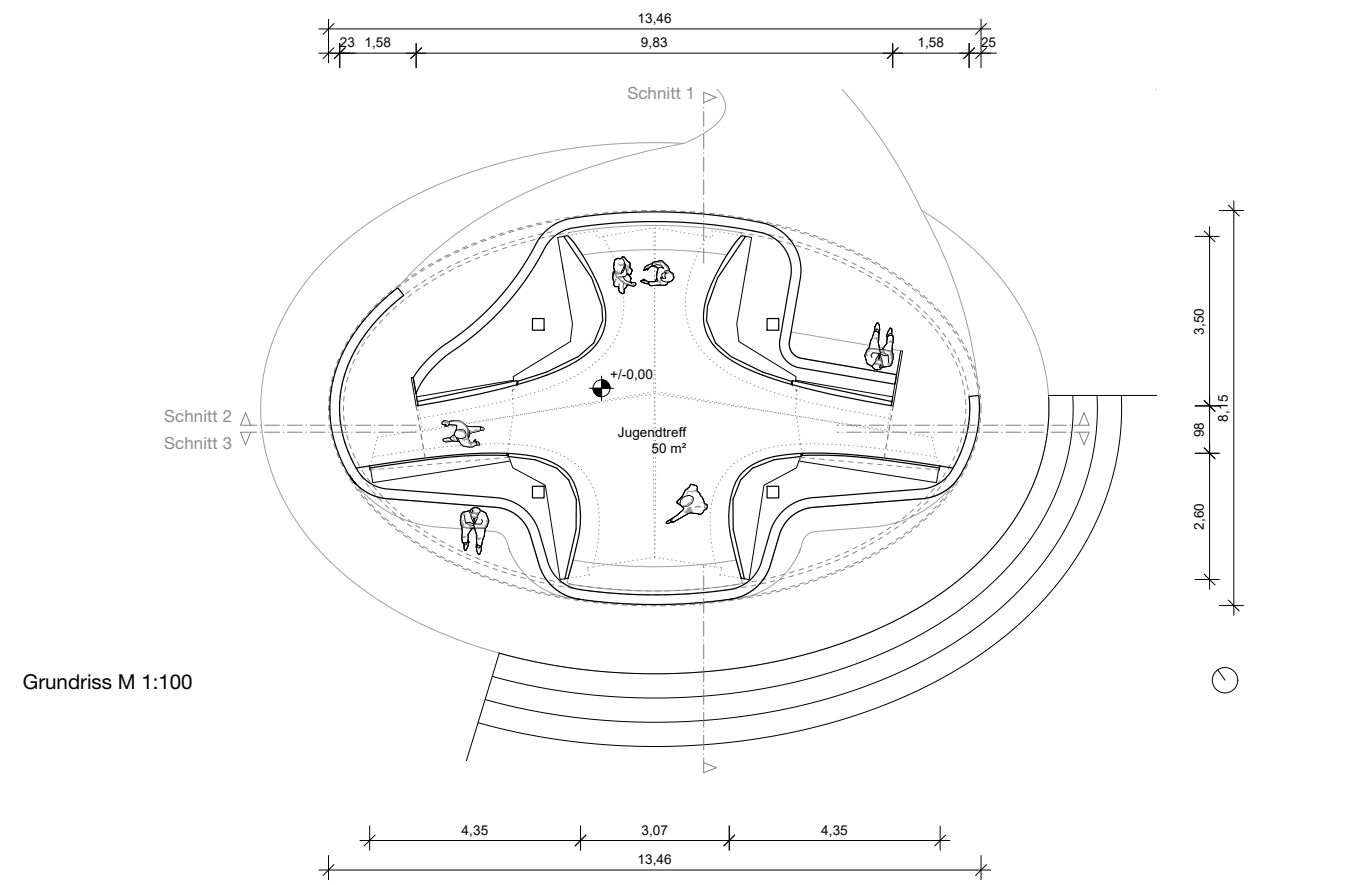
Schnitt 2 M 1:100



Schnitt 1 M 1:100



Schnitt 3 M 1:100





Vielen Dank

